
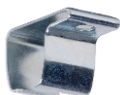






Installation Manual

HOFA Ceiling Mount Set

Accessory Parts:

Rail		Number and length depends on the total length of the system
Ceiling Bracket		Number depends on the length of the rail
Stopper		Usually, one stopper is required at each outer end of the rail
Hook for CurtainTape		Number depends on the width of the curtain
Roller		Number depends on the width of the curtain
Screw		One screw per ceiling bracket
Dowel		One dowel per ceiling bracket

Optional Accessories

Connector		Number depends on the number of rails
S-Hook		For mounting a curtain with eyelets on a rail

General Information:



We recommend that two people carry out the installation. Secure fastening and the correct choice of screws and wall plugs always depend on the condition of the wall or ceiling and can only be correctly assessed on site. If in doubt, please consult a tradesperson.



For trouble-free installation, the surface should be as even as possible. Woodchip wallpaper is normally not a problem. On very uneven surfaces, such as natural stone, for example, installation is very difficult or even impossible. On slightly uneven surfaces, e.g. in old houses, the installation of non-split rails is usually also possible.

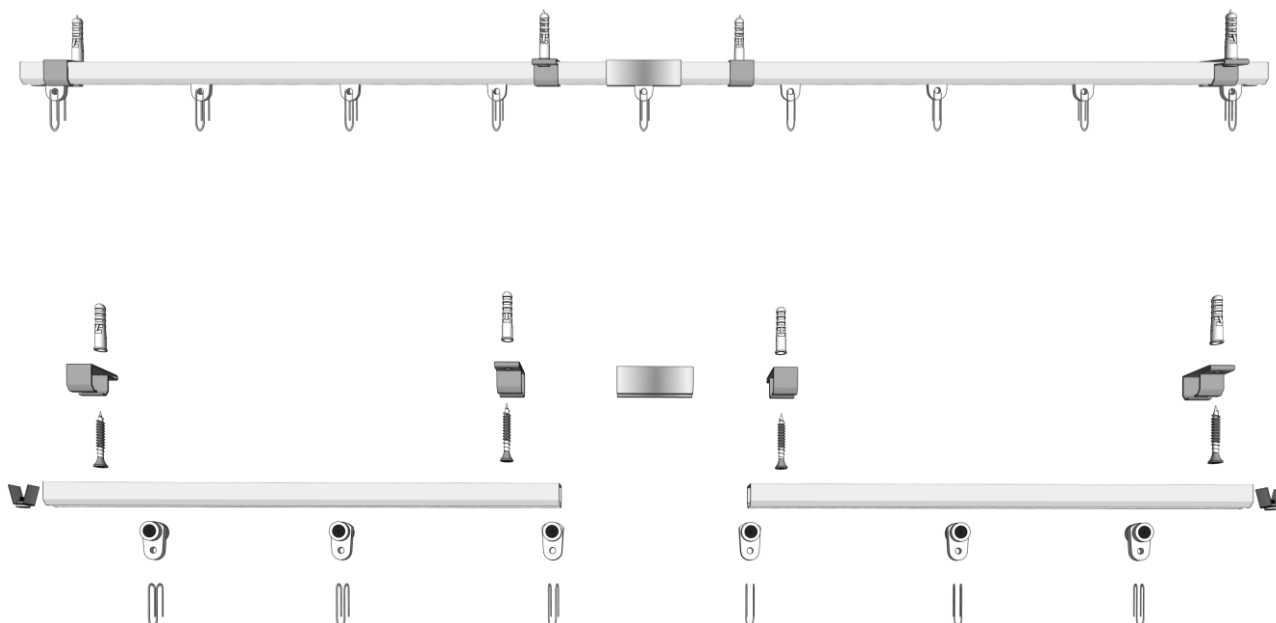


If you have any questions during the installation of the system, please do not hesitate to contact us by phone or e-mail: <https://hofa-akustik.de/en/kontakt/>

Tools and Equipment Required:

- Drilling machine with 6 mm drill bit
- Cordless screwdriver with cross bit
- Slotted screwdriver
- Measuring tape or meter stick
- Pen
- Depending on the surface (additionally): mounting adhesive for gluing in the dowels

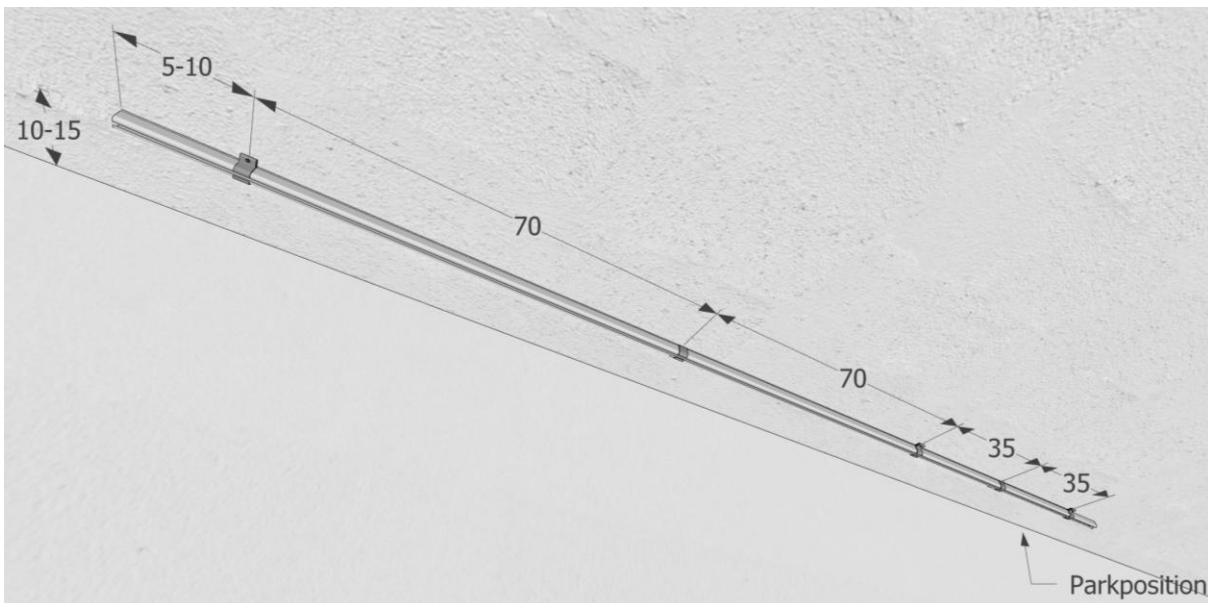
Overview



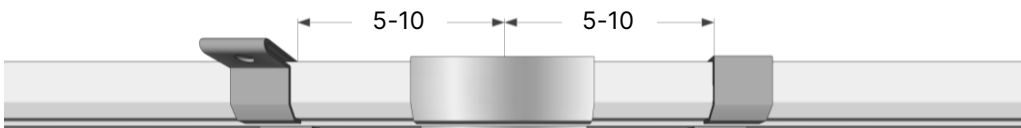
Distribution of the Ceiling Crackets

- **Distance:** Up to 15 kg curtain weight: 70 cm; from 15 kg curtain weight: 40 – 50 cm; this is also very dependent on the surface.
- **Parking position:** Optionally, depending on the surface and/or in the case of extremely heavy curtains, halve the distances between the holders at the parking position of the curtains. Double check the number of holders in the order!
- **End of the rail:** First and last bracket: 5-10 cm from the end of the rail or connector.
- **Wall distance:** The recommended starting point for the wall distance of the rail is 10-15 cm. If the installation of ISO curtains is limited to windows, the distance from the wall should be reduced to approx. 6-8 cm in order to bring the curtain very close to the wall to the left and right of the window for the best possible sound insulation effect.

Example for curtains up to 15 kg:



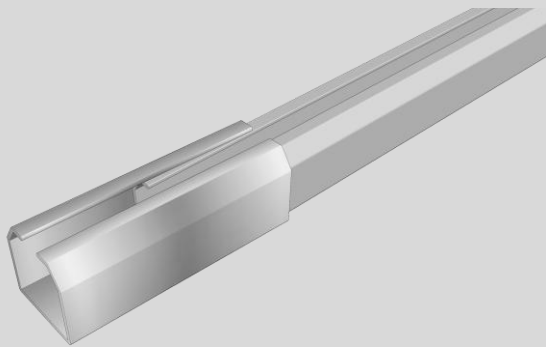
For divided rail systems, a bracket should be placed before and after the connector for stabilization.



Connecting Split Rails with a Connector

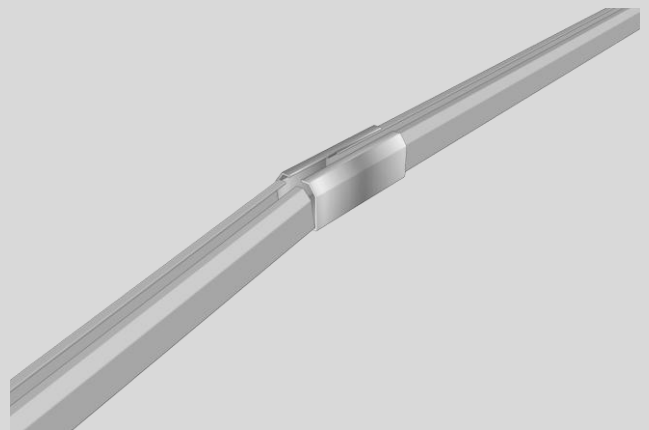
This can be done on the floor in the unmounted state or on an already mounted rail section on the ceiling.

Step 1



Insert the first rail into the connector, pushing it up and down to ease insertion.

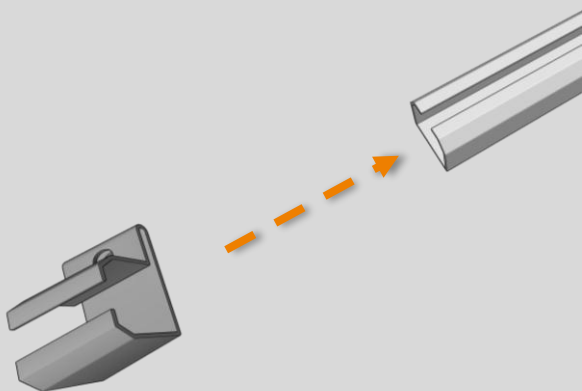
Step 2



Insert the second rail into the connector in the same way until the two rail sections touch in the middle of the connector.

Mounting Steps for Installing the Rail:

Step 1



Spread the ceiling bracket on the open side and slide it onto the rail.

Step 2



Rotate the ceiling bracket by 90° by pressing the bracket tab downwards.

Step 3



Move the ceiling bracket in the shown position with a little pressure to the required position.

Step 4



Turn the ceiling bracket back again at this point. To do this, press the tab in the opposite direction. **Caution:** Please keep enough distance with other fingers or the palm of your hand to avoid injury.

Step 5



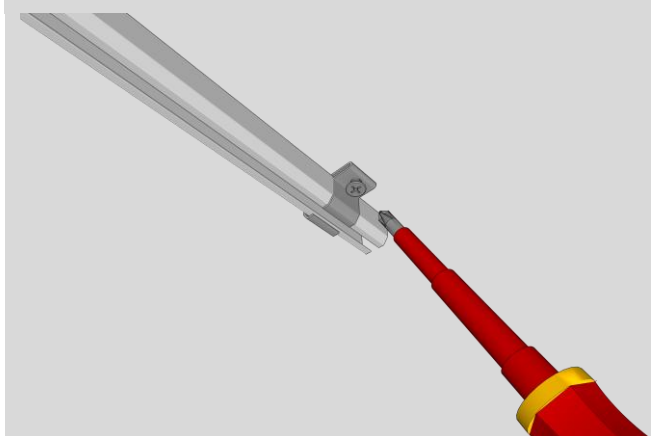
Position the rail as required and mark the drill holes through the hole in the ceiling bracket.

Step 6



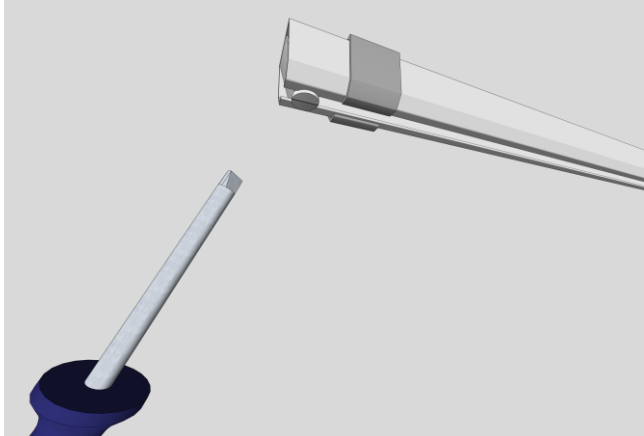
Drill holes at the marked points and insert the dowels.

Step 7



Screw on the brackets.

Step 8



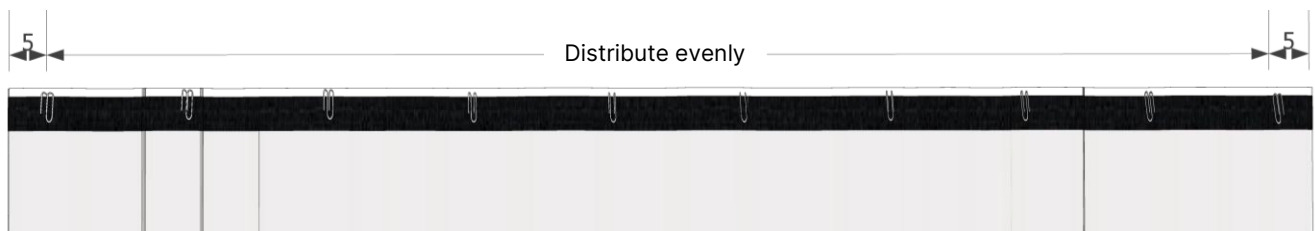
Screw the first stopper to one end of the rail using a slotted screwdriver.

Inserting the Hooks into the Curtain Tape:

Insert the first hook at a distance of 5 cm to the left and right of the end of the curtain tape. Then distribute all further hooks evenly at the distance in between. The formula for calculating the distance for evenly distributing the hooks is:

Curtain width - 10 cm / (number of hooks - 1)

Sketch:



Step 1



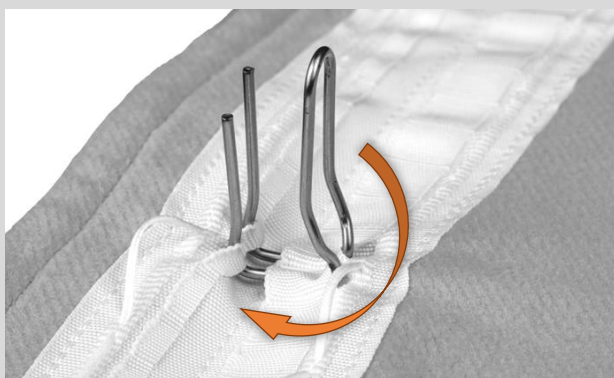
Thread a hook through two adjacent narrow flaps.

Step 2



Pull the hook through the wider flaps.

Step 3



Turn the hooks twice through 90°. Once like this ...

Step 4



... and one more time.

Step 5



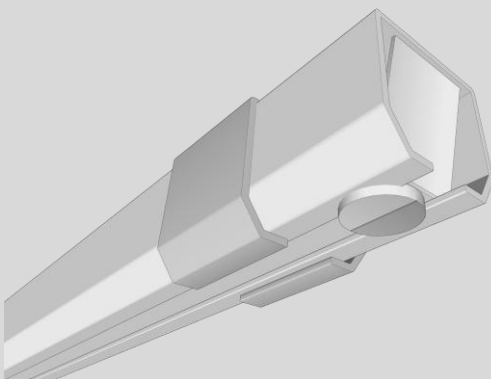
Press the hook together at the end and put it in the roller.

Step 6



Guide the rollers into the rail one after the other, holding the curtain with the other hand to reduce the tensile load on the first rollers.

Step 7



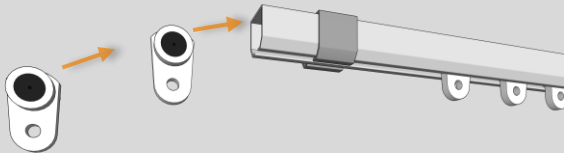
Attach the second stopper to the end of the rail.



Done! Finally, check the system for stability and good roller running properties.

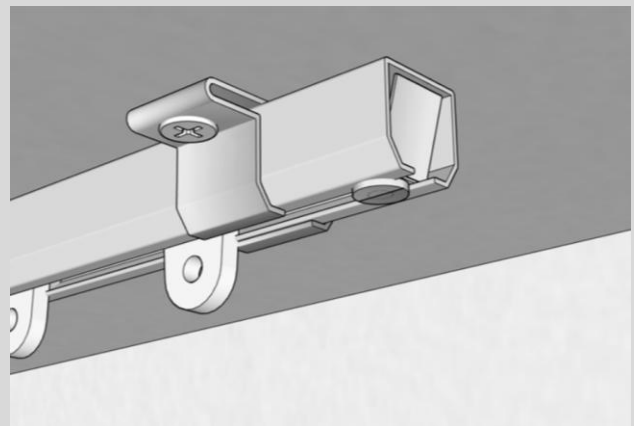
Attaching an Acoustic Curtain with Eyelets on a Rail System:

Step 1



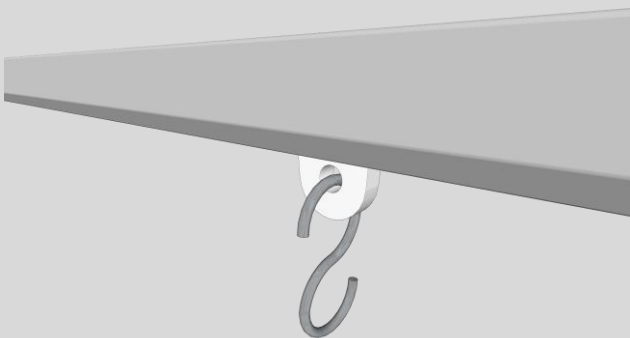
Insert the rollers into the rail.

Step 2



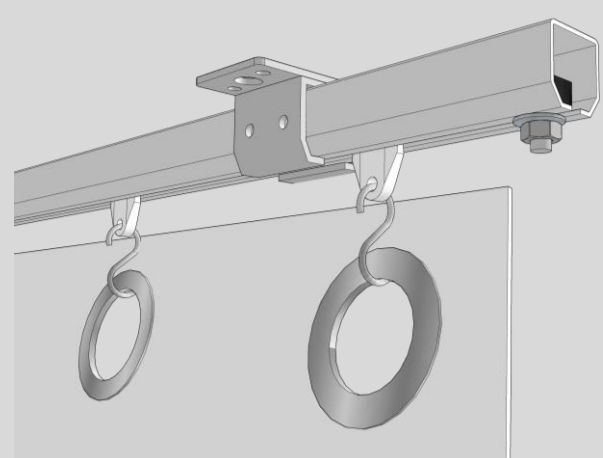
Fit the second stopper at the end of the rail.

Step 3



Thread the s-hooks into the eyelets of the rollers.

Step 4



Hang the curtain in.

Care Instructions:

The HOFA Ceiling Mount Set Light does not require any special maintenance; it should be protected from moisture, though.

▶ HOFA-Akustik

Phone: +49 7251 3472-400 | **Mail:** akustik@hofa.de | hofa-akustik.de/en

- ▶ **HOFA-Plugins** - Premium plugins for a perfect workflow when producing, mixing, and mastering.
- ▶ **HOFA-College** - The international online academy for audio engineering and music production.
- ▶ **HOFA-Media** - Your experienced partner for high-quality CD and pressing.
- ▶ **HOFA-Studios** - Recording, mixing & mastering in one of the most renowned recording studios in Germany.

hofa-plugins.de/en
hofa-college.de/en
hofa-media.de/en
hofa-studios.de/en

HOFA GmbH
Lusshardtstraße 1 -3, 76689 Karlsdorf | Phone 07251 / 3472 – 0 | Mail office@hofa.de | www.hofa.de/en
Managing Director: Jochen Sachse, Jan Bönisch | District Court Mannheim HRB Nr. 231615