






Installation Manual

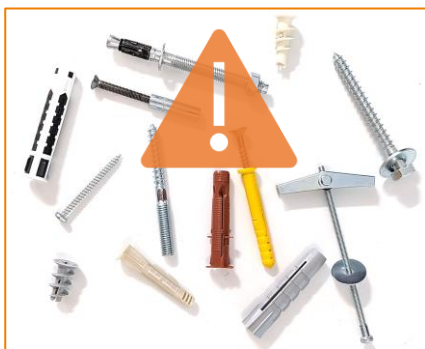
HOFA Curtain Rod Set

Ceiling Mount with Ceiling Brackets

Accessory Parts:

Rod		Length and number of pieces depending on the total length of the system
Base Plate		Number depends on the length of the rod
Cover Plate		One cover plate per base plate
Ceiling Bracket		One ceiling bracket per base plate
End Cap		Usually, one end cap is required at each outer end of the rail.

Mounting Parts not Included



For safety reasons, we do not include dowels and screws for fitting heavy curtains.

The correct selection of suitable fastening components depends on the surface. If in doubt, please check the load-bearing capacity of the surface and the choice of dowels and screws with a specialist.

General Information:



We recommend that two people carry out the installation. Secure fastening and the correct choice of screws and wall plugs always depend on the condition of the wall or ceiling and can only be correctly assessed on site. If in doubt, please consult a tradesperson.



For trouble-free installation, the surface should be as even as possible. Woodchip wallpaper is normally not a problem. On very uneven surfaces, such as natural stone, for example, installation is very difficult or even impossible. On slightly uneven surfaces, e.g. in old houses, the installation of non-split rails is usually also possible.

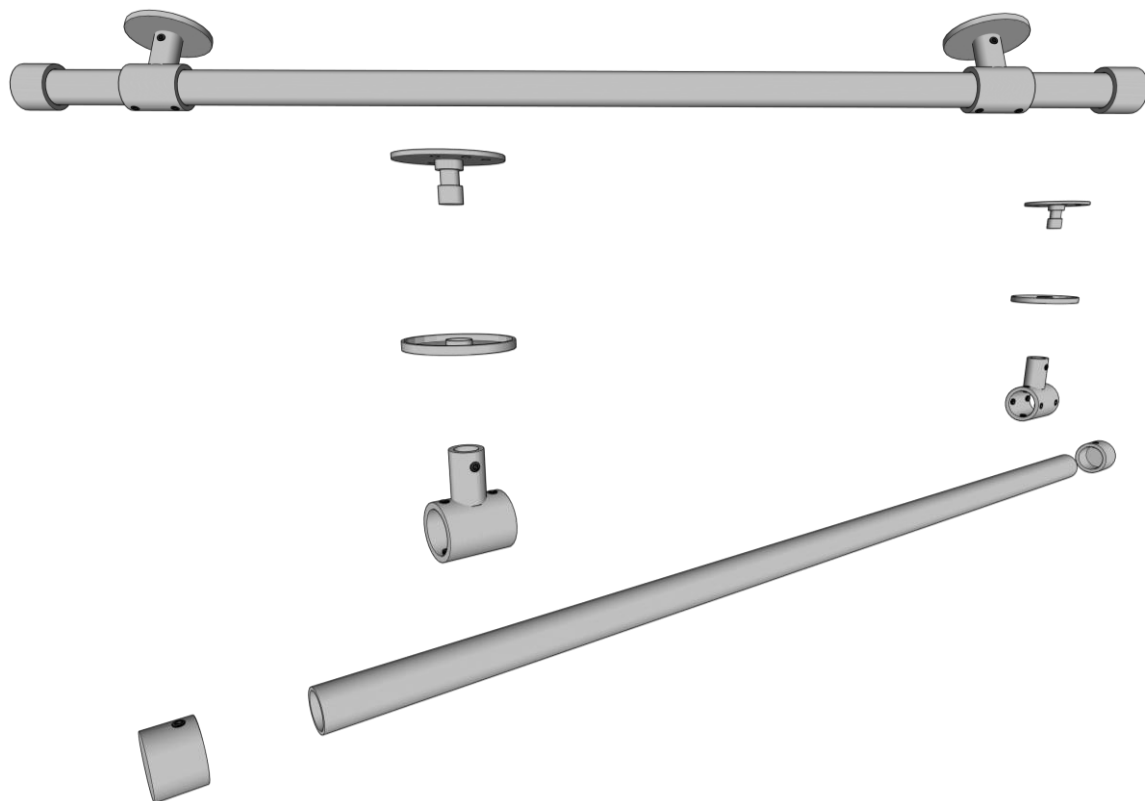


If you have any questions during the installation of the system, please do not hesitate to contact us by phone or e-mail: <https://hofa-akustik.de/en/kontakt/>

Tools and Equipment Required:

- Drilling machine with drill bit
- Cordless screwdriver with bit
- Allen key mm
- Spirit level
- Pen
- Depending on the surface (additionally): mounting adhesive for gluing in the dowels

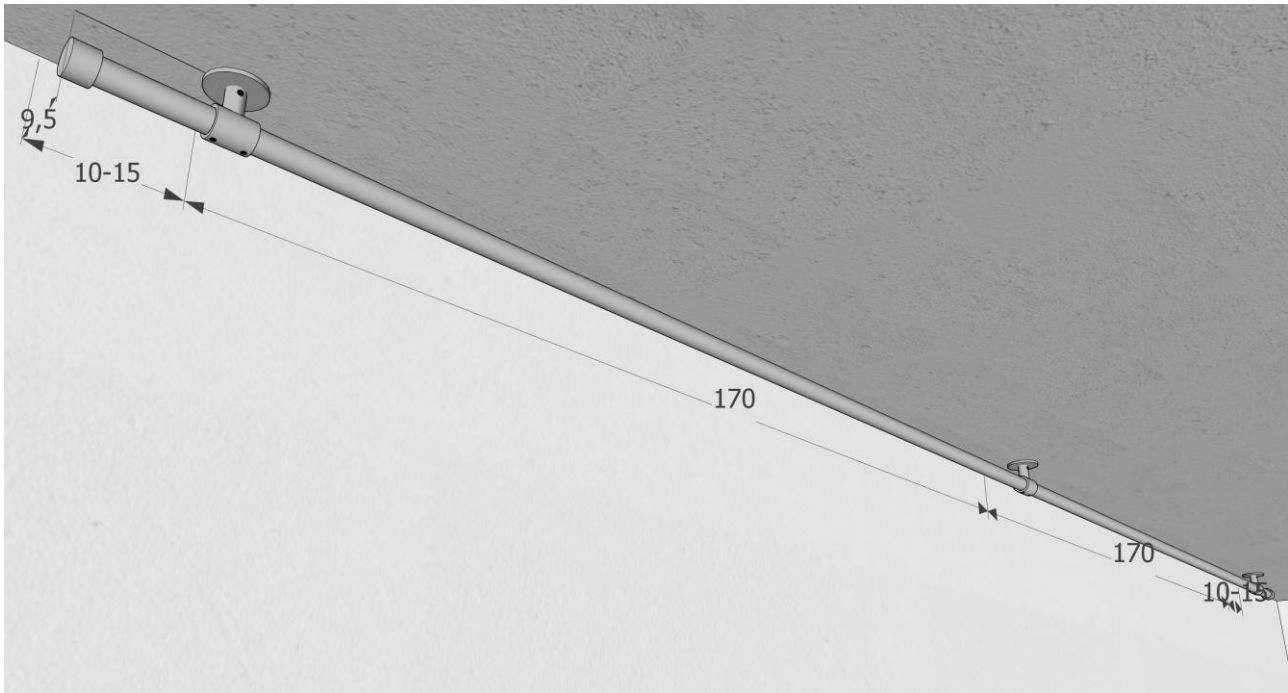
Overview:



Positioning of the Holders

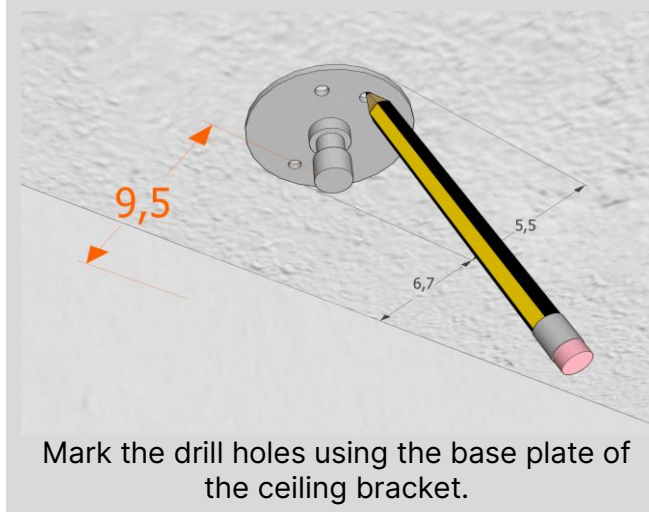
If the system is installed in front of a wall, the rod should be mounted at a distance of approx. 9.5 cm from the wall.

Example for 370 cm rod length (split rod)



Mounting Steps for Installation

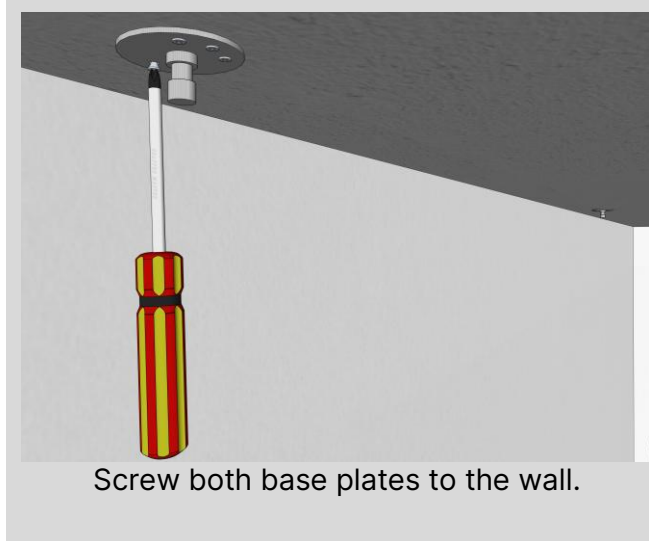
Step 1



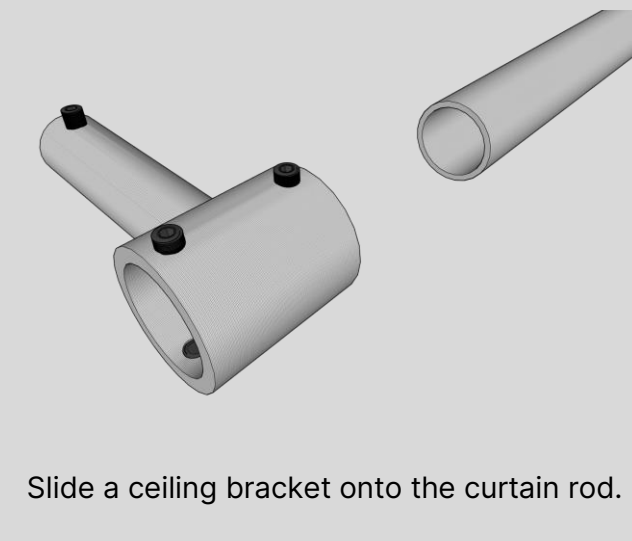
Step 2



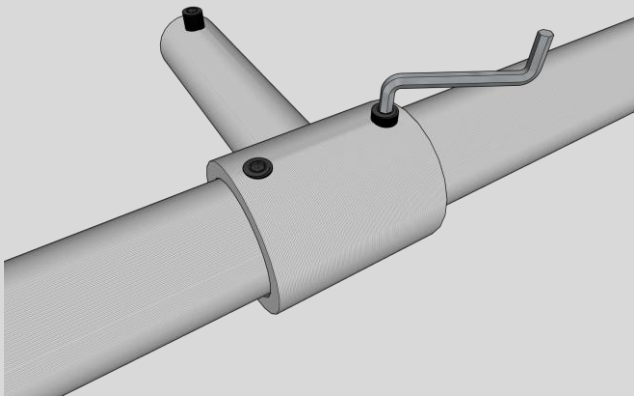
Step 3



Step 4

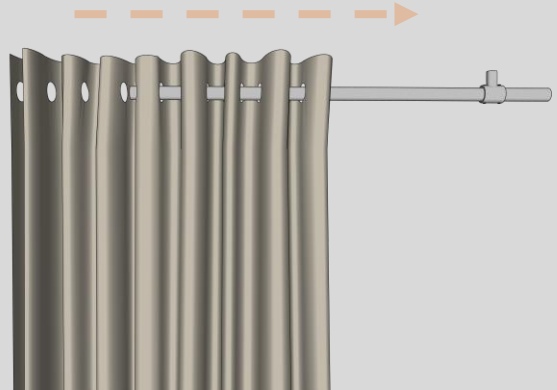


Step 5



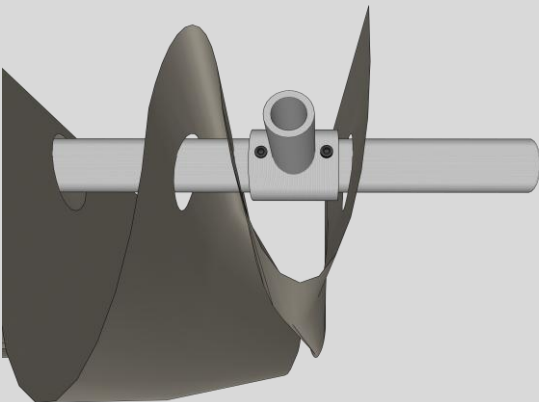
Tighten the 4 grub screws for clamping the rod evenly with a 4 mm Allen key until the rod is firmly clamped.

Step 6



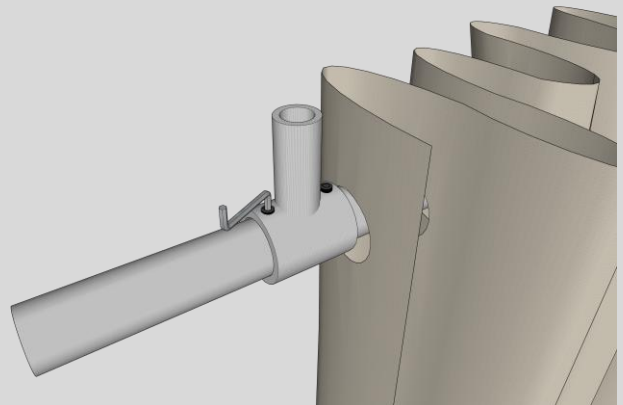
Thread the curtain onto the rod.

Tipp:



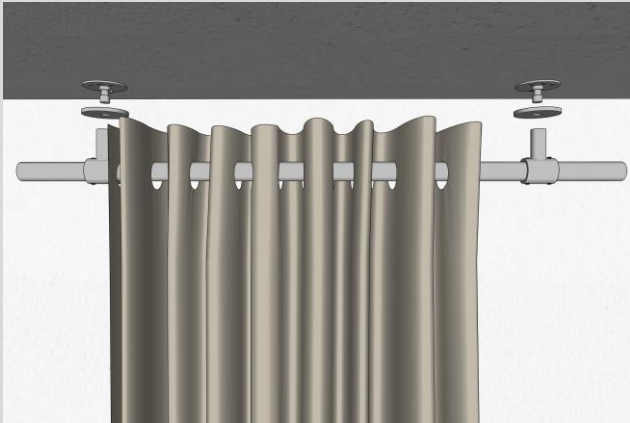
One side of the curtain can be fixed on one side using a holder if necessary.

Step 7



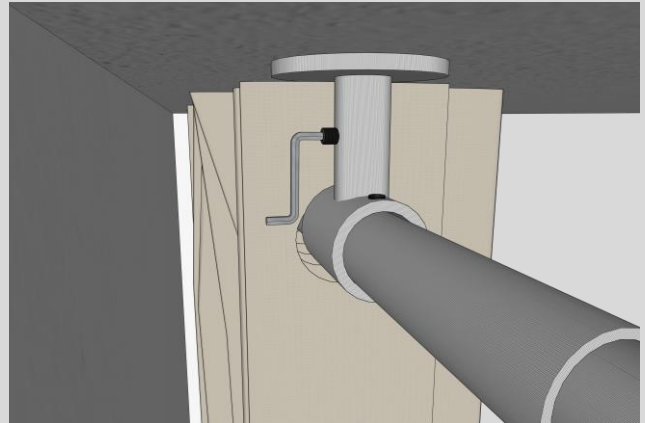
Slide the second ceiling bracket onto the rod and secure it with the grub screws.

Step 8



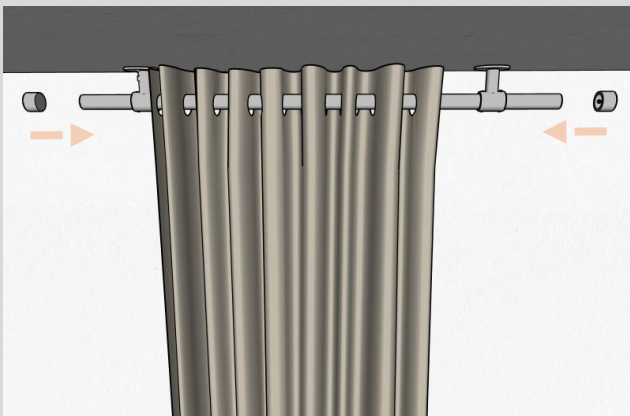
Position the curtain rod with the covers under the base plates and slide it into the holders in the base plates.

Step 9

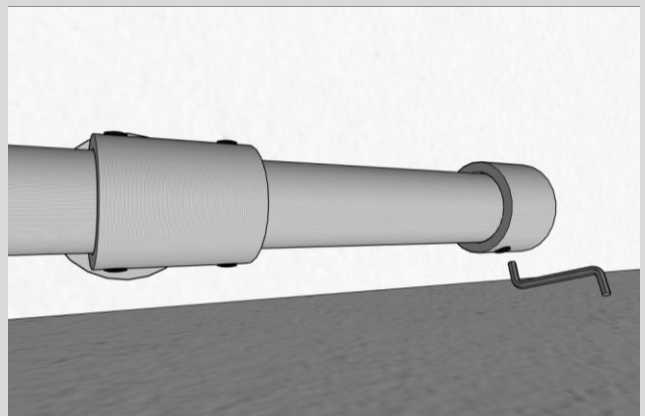


Hold the position and tighten both grub screws on the holder.

Step 10



Slide the end caps onto the ends of the rods...



...and tighten with the grub screws.

Care Instructions:

The HOFA Curtain Rod Set Heavy does not require any special maintenance; it should be protected from moisture, though.

▶ HOFA-Akustik

Phone: +49 7251 3472-400 | **Mail:** akustik@hofa.de | hofa-akustik.de/en

- ▶ **HOFA-Plugins** - Premium plugins for a perfect workflow when producing, mixing, and mastering.
- ▶ **HOFA-College** - The international online academy for audio engineering and music production.
- ▶ **HOFA-Media** - Your experienced partner for high-quality CD and pressing.
- ▶ **HOFA-Studios** - Recording, mixing & mastering in one of the most renowned recording studios in Germany.

hofa-plugins.de/en
hofa-college.de/en
hofa-media.de/en
hofa-studios.de/en

HOFA GmbH

Lusshardtstraße 1 -3, 76689 Karlsdorf | Phone 07251 / 3472 – 0 | Mail office@hofa.de | www.hofa.de/en
Managing Director: Jochen Sachse, Jan Bönisch | District Court Mannheim HRB Nr. 231615